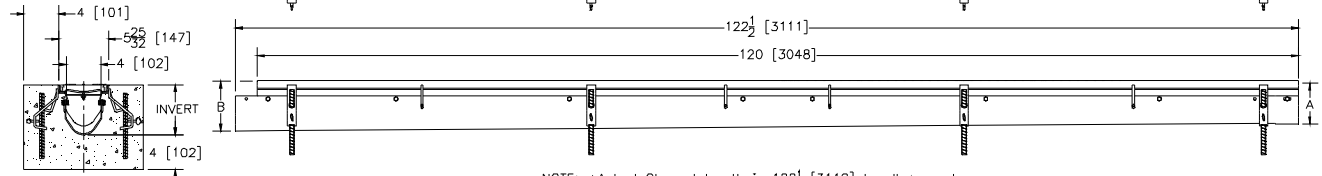


**ZFV806****6 [159] WIDE REVEAL FIBER REINFORCED
VINYLESTER TRENCH DRAIN SYSTEM****TRENCH DRAIN
SUPPLY**

Supplied By:

877-903-7246
www.trenchdrainsupply.com**SPECIFICATION SHEET****TAG** _____

Dimensional Data (inches and [mm]) are Subject to Manufacturing Tolerances and Change Without Notice

SPECIFYING ENGINEER IS
RESPONSIBLE FOR CONCRETE
ENCASEMENT AND REINFORCING
BASED UPON APPLICATION AND
LOCAL CODES.

NOTE: +Actual Channel length is 122 1/2 [3112] to allow overlap.

ENGINEERING SPECIFICATION: Zurn ZFV806

Channels shall be 120 [3048] long, 6 [152] wide and have a 4 [102] throat. Modular channel sections shall be made of Fiber Reinforced Vinylester. Shall have a positive mechanical connection between channel sections that will not separate during the installation. Channels shall weigh less than 2.31 lbs.[1.05 kg] per linear foot, have a smooth, 1-1/2 [38] radiused self cleaning bottom with a Manning's coefficient of .009 and .75% or neutral 0% built in slope. Shall be provided with standard DGC grates that lock down to frame. Zurn 6 [152] wide reveal Ductile Iron Slotted Grate conforming to ASTM specification A536, Grade 80-55-06. Ductile Iron grate is rated class C per the DIN EN1433 top load classifications. Supplied in 20 [508] nominal lengths with 1/2 [13] wide slots, and 3/4 [19] bearing depth. Grate has an open area of 28.6 sq. in. per ft. [60,521 sq. mm per meter]. The #10 gage thick Heavy-Duty Carbon Steel Frame Assembly conforms to ASTM specification A36. Frames shall mechanically lock into the concrete surround at a maximum spacing of every 20 [508] with 16 concrete anchors per 120 [3048]. Frames shall have rebar attachment brackets as standard to secure trench in its final location. Grate lockdown bars are to be integral to the frame. The frame is supplied with a powder coated finish. All welds must be performed by a certified welder per ASTM standard AWS D1.1. Channels have a 94-5VA Flammability Rating per ASTM D5048 and a V-O flammability rating per ASTM D3801. Frames and Channels shall be produced in the U.S.A.

PREFIX OPTIONS (Check/specify appropriate options)

ZFV Ten-foot Fiber Reinforced Vinylester*

SUFFIX OPTIONS (Check/specify appropriate options)**Outlet Adapters Add/Each**

—E1	Closed End Cap	—U2	2 [51] No-Hub Bottom Outlet
—E2	2 [51] No-Hub End Outlet	—U3	3 [76] No-Hub Bottom Outlet
—E3	3 [76] No-Hub End Outlet	—U4	4 [102] No-Hub Bottom Outlet
—E4	4 [102] No-Hub End Outlet	—U6	6 [152] No-Hub Bottom Outlet
—E6	6 [152] No-Hub End Outlet		

Grate Options (Load Classifications are per DIN EN1433)

—BDC	Black Acid Resistant Epoxy Coated Ductile Grate - Class C
—BDE	Black Acid Resistant Epoxy Coated Ductile Grate - Class E
—BG	Galvanized Ductile Iron Cast Bar Grate - Class C
—DC	Ductile Iron Solid Cover - Class C
—DBG	Ductile Iron Cast Bar Grate - Class C
—DGC	Ductile Iron Slotted Grate - Class C*
—DGE	Ductile Iron Slotted Grate - Class E
—DGE-NA	Ductile Iron Slotted Grate - Class E -North American
—GDC	Galvanized Ductile Slotted Grate - Class C
—GDE	Galvanized Ductile Slotted Grate - Class E
—GG	Fiberglass Grate - Class A
—GHPD	Galvanized Heel-Proof Ductile Grate - Class B
—GHPDE	Galvanized Heel-Proof Ductile Grate - Class E
—HPD	Heel-Proof Ductile Slotted Grate - Class B
—HPDE	Heel-Proof Ductile Slotted Grate - Class E
—HPP	Heel-Proof Polyethylene Grate - Class A
—LD	Ductile Iron Longitudinal Slotted Grate - Class B
—RFG	Reinforced Galvanized Steel Slotted Grate - Class B
—RFGC	Reinforced Galvanized Steel Slotted Grate - Class C.
—RFSC	Reinforced Stainless Steel Slotted Grate - Class C.
—RPG	Reinforced Galvanized Perforated Grate - Class B
—RPGC	Reinforced Galvanized Perforated Grate - Class C.
—RPSC	Reinforced Perforated Stainless Steel Grate - Class C
—RPGR	Reinforced Galvanized Perforated Reverse Punch Anti-Slip Grate - Class B
—RPGR	Reinforced Galvanized Perforated Reverse Punch Anti-Slip Grate - Class C.
—RPSRC	Reinforced Perforated Stainless Steel Reversed Punch Grate - Class C

Miscellaneous Options

—DB	Bottom Dome Strainer
—JC	Joint Connector
—VP	Vandal-Proof Lockdown
—CBF	Black Acid Resistant Coated Top Frame
—HDG	Galvanized Extra-Heavy-Duty Frame Assembly With Anchor Studs and Grate Lockdown Hardware
—SF	Type 304 Stainless Steel Top Frame Assembly

Decorative Grate Options (Load Classifications are per DIN EN1433)

—BCD	Bronze Circular Decorative Grate - Class A
—BDD	Bronze Diagonal Decorative Grate - Class A
—DCD	Ductile Iron Circular Decorative Grate - Class C
—DDD	Ductile Iron Diagonal Decorative Grate - Class A
—DOG	Ductile Iron Decorative Grate - Class A
—DTW	Ductile Iron Tidal Wave Grate - Class C
—DWV	Ductile Wave Decorative Grate - Class A
—HPB	Heel-Proof Bronze Slotted Grate - Class A
—HPS	Heel-Proof Stainless Steel Slotted Grate - Class A

* Regularly furnished unless otherwise specified.

	'A' Shallow Inv.	'B' Deep Inv.			
			(cfs)	(gpm)	(lps)
1002	4.75 [121]	5.65 [144]	.326	146	9
1002N	5.65 [144]	5.65 [144]	-	-	-
1003	5.65 [144]	6.55 [166]	.427	192	12
1004	6.55 [166]	7.45 [189]	.530	238	15
1004N	7.45 [189]	7.45 [189]	-	-	-
1005	7.45 [189]	8.35 [212]	.635	285	18
1006	8.35 [212]	9.25 [235]	.740	332	21
1007	9.25 [235]	10.15 [258]	.845	379	24
1008	10.15 [258]	11.05 [281]	.951	427	27
1008N	11.05 [281]	11.05 [281]	-	-	-
1009	11.05 [281]	11.95 [304]	1.058	475	30
1010	11.95 [304]	12.85 [326]	1.164	523	33

Note:

The maximum fluid temperature through the system must not exceed 212°F [100°C] and the range (Max. Temp. to Min. Temp.) must not exceed 100°F [38°C].

Decorative Grate Options Cont. (Load Classifications are per DIN EN1433)

—SBG	Stainless Steel Bar Grate - Class E
—SCD	Stainless Steel Circular Decorative Grate - Class B
—SDD	Stainless Steel Diagonal Decorative Grate - Class B
—SMG	Stainless Steel Mesh Grate - Class B
—SOG	Stainless Steel Decorative Grate - Class B

MADE in the U.S.A. (Load Classifications are per DIN EN1433)

—AWG	Aluminum Wire Grate - Class A
—BDE-USA	Black Acid Resistant Epoxy Coated Ductile Grate - Class E
—DCE-USA	Ductile Solid Cover - Class E
—DGC-USA	Ductile Iron Slotted Grate - Class C
—DGE-USA	Ductile Iron Slotted Grate - Class E
—FG	Fabricated Galvanized Steel Slotted Grate - Class A
—FS	Fabricated Stainless Steel Slotted Grate - Class A
—GDC-USA	Galvanized Ductile Slotted Grate - Class C
—GDE-USA	Galvanized Ductile Slotted Grate - Class E
—GMG	Galvanized Steel Mesh Grate - Class B
—GHPDE-USA	Galvanized Heel-Proof Ductile Grate - Class E
—HPDE-USA	Heel-Proof Ductile Slotted Grate - Class E
—PG	Perforated Galvanized Steel Grate - Class A
—PGR	Galvanized Perforated Reverse Punch Anti-Slip Grate - Class A
—PPC	Plastic Perforated Grate -Class C
—PS	Perforated Stainless Steel Grate - Class A
—PSR	Stainless Steel Perforated Reverse Punch Anti-Slip Grate - Class A

Decorative MADE in the U.S.A. (Load Classifications are per DIN EN1433)

—BZ	Bronze Decorative Grate - Class A
—NBZ-USA	Nickel Bronze Decorative Grate - Class A
—PDE-USA	Ductile Iron Perforated ADA Grate - Class E
—PSR	Perforated Stainless Steel Raised Grate - Class A
—SWG	Stainless Steel Wire Grate - Class A

Zurn Industries, LLC | Specification Drainage Operation

1801 Pittsburgh Avenue, Erie, PA U.S.A. 16502 · Ph. 855-663-9876, Fax 814-454-7929

In Canada | **Zurn Industries Limited**

3544 Nashua Drive, Mississauga, Ontario L4V 1L2 · Ph. 905-405-8272, Fax 905-405-1292

www.zurn.com

Rev. H

Date: 07/23/14

C.N. No. 131261

Prod. | Dwg. No. ZFV806